



TRANSLUCENT ROOF MEMBRANE



TIMBER CLADDING

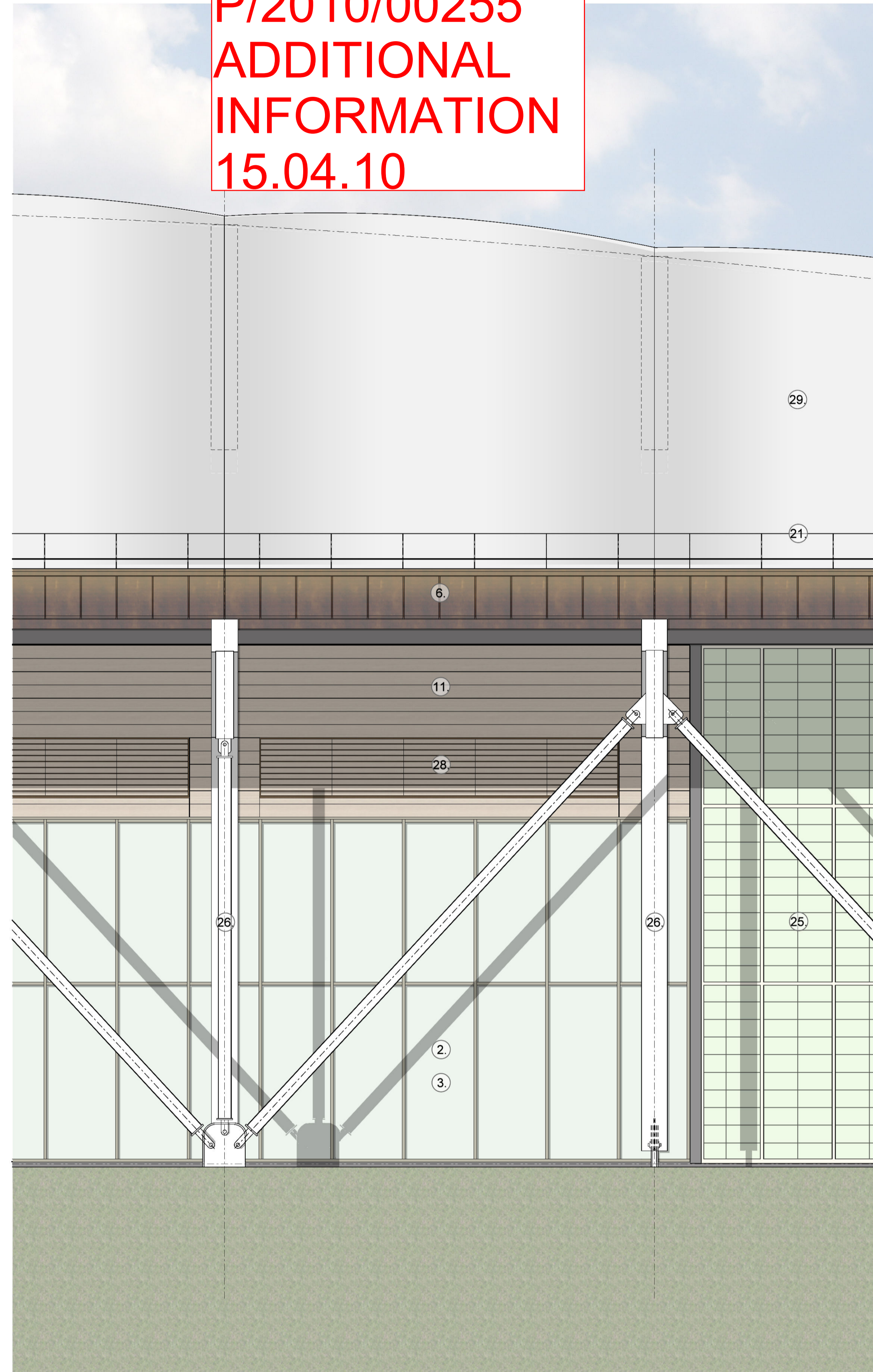


KALWALL

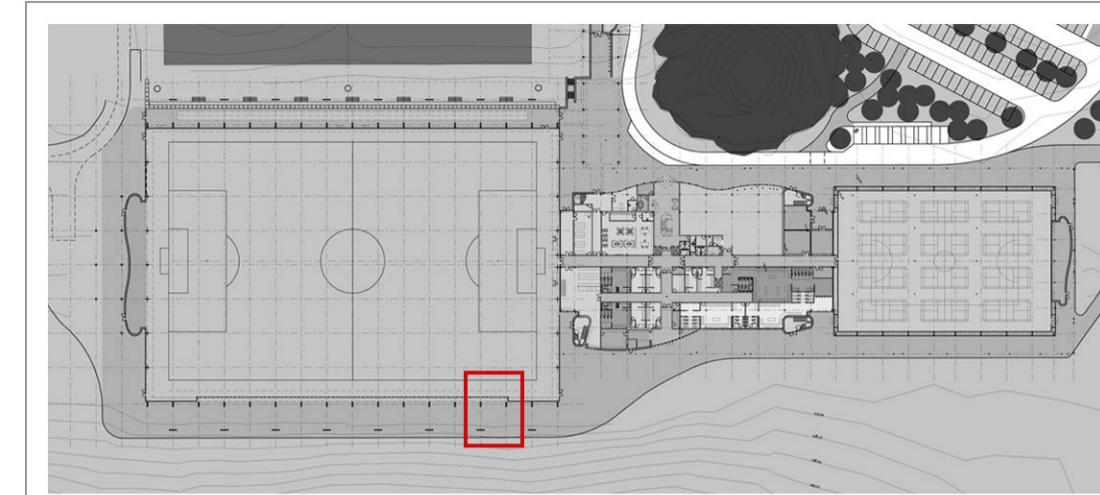


STRUCTURAL STEEL COLUMNS
PRECEDENTS

P/2010/00255
ADDITIONAL
INFORMATION
15.04.10



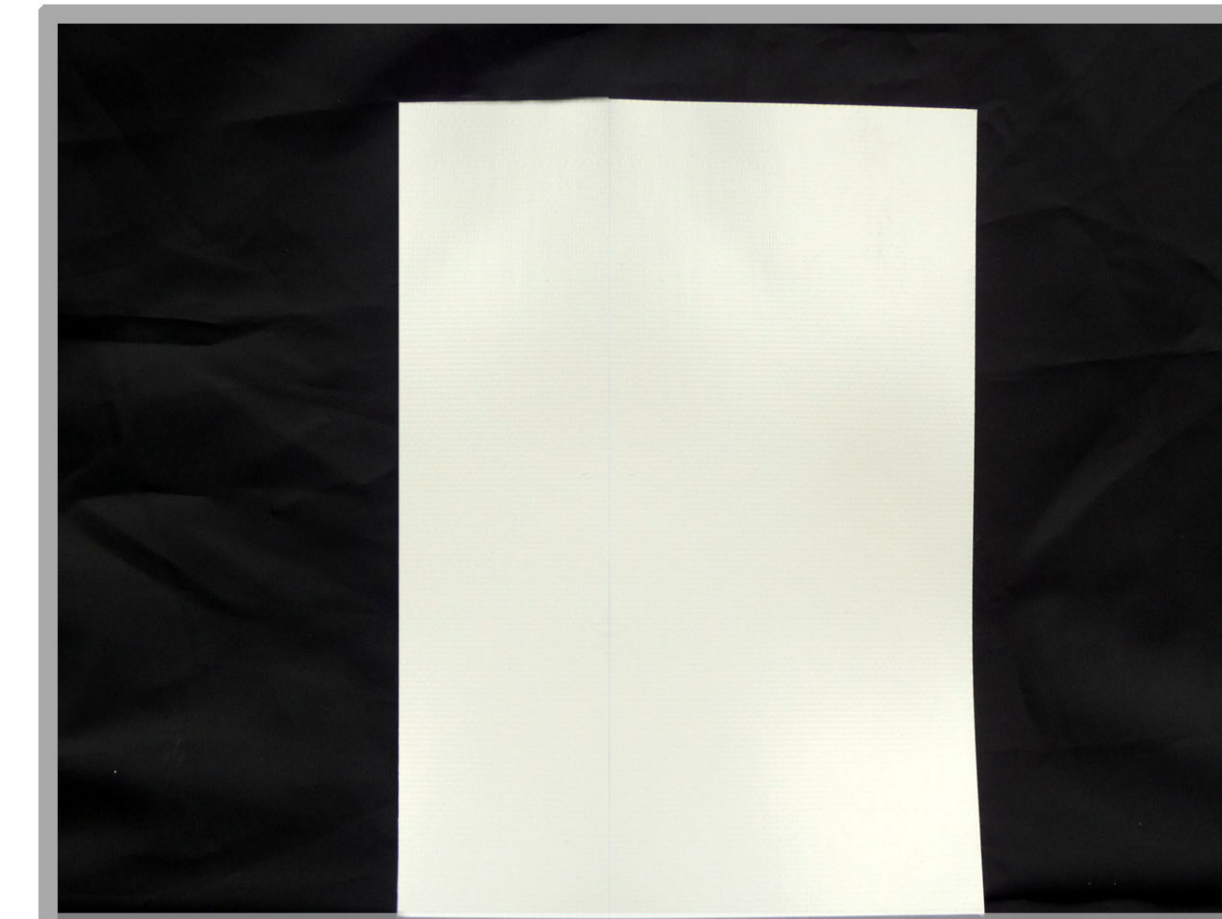
PART ELEVATION



LOCATION PLAN

MATERIAL LEGEND

- ① Pre patinated copper cladding
- ② PPC curtain walling
- ③ Sealed double glazed units
- ④ Sealed double glazed insulated spandrel panels
- ⑤ Bronze anodised aluminium louvre blades
- ⑥ Pre weathered brass cassette panels to soffit and fascias
- ⑦ Pre weathered brass strip cladding
- ⑧ Pre weathered brass plank cladding
- ⑨ Structural glazing (double glazed)
- ⑩ Stone cladding
- ⑪ Oak strip boarding cladding
- ⑫ Oak solar shading fins
- ⑬ ppc channel
- ⑭ Laminated glass balustrade
- ⑮ Laminated timber column with engineered steel head and base connection details
- ⑯ Stainless steel bracing to porte cochere
- ⑰ Bronze screen to plant louvres
- ⑱ Roller shutter doors
- ⑲ ppc steel doorset
- ⑳ Standing seam metal deck roofing
- ㉑ Handrail: ppc 12 x50 flats
- ㉒ Prepatinated copper rooflight surround
- ㉓ ppc louvres
- ㉔ ppc rainscreen cassette cladding
- ㉕ Kalwall cladding panels in ppc support framework
- ㉖ Painted steel columns with engineered head and base details
- ㉗ Opaque double glazed units
- ㉘ Timber louvres
- ㉙ Tensile opaque fabric roof covering
- ㉚ Gabion walling
- ㉛ Dressed stone walling



TENSILE OPAQUE ROOF COVERING



PRE WEATHERED BRASS



CURTAIN WALLING



KALWALL
MATERIALS